



# Jobsite

Product solutions for new constructions

EXPERTISE  
RESIDENTIAL & PUBLIC BUILDINGS











# Our Building Site: Your Success!

## Quality and service

Customised solutions are the foundation of your success. Therefore, we support you professionally from planning to implementation on the construction site. We combine individual consulting with maximum results. Based on our long term experience in research and practice, we are able to offer you the perfect products.

Your benefits: You know the appropriate system for every requirement, getting the best out of resources. Put the finishing touches to concrete with Emcefix and Nafuquick fillers, use Ortolan and Emcoril to achieve high quality surfaces or permanently waterproof with Nafuflex and Expert Proof.

This product overview supports you in important decisions on the jobsite. It also introduces high performance products which will make your and your customers' lives easier. Before usage please refer to the technical data sheets and your technical expert from MC. For current information please also see: [www.mc-bauchemie.com](http://www.mc-bauchemie.com)

Release agents <a href="#">Ortolan</a>	04 – 05
Concrete curing <a href="#">Emcoril</a>	06 – 07
Waterproofing <a href="#">Nafuflex</a>	08 – 09
Bitumen-free waterproofing systems <a href="#">Expert Proof</a>	10 – 11
Concrete Cosmetics <a href="#">Nafuquick</a> , <a href="#">Emcefix</a>	12 – 17
Concrete Cosmetics additives <a href="#">Fluresit</a> , <a href="#">Murafan</a>	18
Tools <a href="#">MC-Top</a> , <a href="#">MC-Concretefinish</a>	19
Concrete retouch / glaze <a href="#">Repacryl</a>	20 – 21
Concrete repair <a href="#">Nafufill</a>	22 – 23
Surface protection <a href="#">MC-Color</a>	24 – 25
Repair mortar <a href="#">Reparoxyd</a>	26 – 27
Hydrophobic impregnation <a href="#">Nisiwa</a>	28 – 29
Grout concrete and grout mortars <a href="#">Emckrete</a>	30 – 31
Underfilling / Assembling mortar <a href="#">Emckrete UFM</a> , <a href="#">MFT</a>	32 – 33
Special mortars <a href="#">SX</a> , <a href="#">Nafufill</a> , <a href="#">Emckrete</a>	34 – 35
Flooring compounds <a href="#">MC-Estrifan SN</a>	36 – 37
Floor surface protection <a href="#">MC-Estrifan</a>	38 – 39
Crack repair <a href="#">MC-Estrifan RIS</a>	40 – 41
Care & Cleaning	42 – 43

# Ortolan

## Protects, preserves, separates

With Ortolan release agents you can release the formwork from the hardened concrete. Simply and safely. Your benefit from easier demoulding: you gain a superb fairfaced concrete, avoid pores and cavities. And this without influencing the hardening or coloration of your concrete. At the same time, the release agents protect and preserve the formworks, lessen corrosion and can therefore increase their life spans. For your durable premium concrete surfaces!

### Complementary tools

<b>MC-Pump 1</b>	Canister pimps
<b>MC-Pump 2</b>	Drum pumps
<b>MC-Pump 3</b>	Backpack sprayer
<b>MC-Spezialspritze</b>	Compression sprayer



Ortolan

## Basic 761

Robust concrete release agent,  
for all types of formworks

### Product properties

- Good separating properties
- For standard concrete surface quality
- Protect and care for the formwork
- With anti-corrosion properties
- Insensitive to weathering
- Easy sprayable
- Economical consumption
- Low in odour
- Ready to use
- Solvent-free
- Liquid
- Fast biodegradable acc. to OECD 301 F (99% after 28d)

### Areas of application

- Universal suitable for use in concrete and reinforced concrete constructions
- For absorbent and non-absorbent formworks
- For demoulding of concrete goods
- For heated formworks up to +80 °C

### Characteristics

#### Density

0.84 g/cm<sup>3</sup>

#### Viscosity

12 s

#### Consumption

10–15 ml/m<sup>2</sup>

(non-absorbent formwork)

15–30 ml/m<sup>2</sup>

(absorbent formwork)

#### Flash point

> 140 °C

#### Water hazard class

1

#### GISCODE

BTM 20

### Form of delivery

30 l canister

200 l barrel

1000 l container



Ortolan

## Classic 711

Universal concrete release agent,  
for all types of formworks

### Product properties

- Very good separating properties
- For high quality concrete surfaces
- Protect and care for the formwork
- With anti-corrosion properties
- Insensitive to weathering
- Easy sprayable
- Economical consumption
- Low in odour
- Ready to use
- Solvent-free
- Liquid
- Fast biodegradable acc. to OECD 301 F (99% after 28d)

### Areas of application

- Universal suitable for use in concrete and reinforced concrete constructions
- For absorbent and non-absorbent formworks
- For heated formworks up to +80°C

### Characteristics

**Density**  
0.85 g/cm<sup>3</sup>

**Viscosity**  
14 s

**Consumption**  
10–15 ml/m<sup>2</sup>  
(non-absorbent formwork)  
15–30 ml/m<sup>2</sup>  
(absorbent formwork)

**Flash point**  
> 140°C

**Water hazard class**  
1

**GISCODE**  
BTM 20

### Form of delivery

30 l canister  
200 l barrel  
1000 l container



Ortolan

## Classic 725

Hydrophilic concrete release agent,  
corrosion-inhibiting, for moist formworks

### Product properties

- Very good separating properties
- For good concrete surface quality
- Can be applied directly after wet cleaning
- Protect and care for the formwork
- With corrosion protection
- Insensitive to weathering
- Easy sprayable
- Economical consumption
- Ready to use
- Solvent-free
- Liquid

### Areas of application

- Universal suitable for use in concrete and reinforced concrete constructions
- For absorbent and non-absorbent formworks
- For moist formworks

### Characteristics

**Density**  
0.84 g/cm<sup>3</sup>

**Viscosity**  
14 s

**Consumption**  
10–15 ml/m<sup>2</sup>  
(non-absorbent formwork)  
15–30 ml/m<sup>2</sup>  
(absorbent formwork)

**Flash point**  
> 140°C

**Water hazard class**  
1

**GISCODE**  
BTM 20

### Form of delivery

30 l canister  
200 l barrel  
1000 l container

Ortolan

## Classic 731

Special concrete release agent,  
for non-absorbent formworks

### Product properties

- Extremely good separating properties
- For high quality and exposed concrete surfaces
- For especially thin release film
- Protect and care for the formwork
- With corrosion protection
- Insensitive to weathering
- Easy sprayable
- Economical consumption
- Ready to use
- Solvent-based
- Liquid

### Areas of application

- Universal suitable for use in concrete and reinforced concrete constructions
- For non-absorbent formworks
- For heated formworks up to +80°C

### Characteristics

**Density**  
0.84 g/cm<sup>3</sup>

**Viscosity**  
11 s

**Consumption**  
15–40 ml/m<sup>2</sup>  
(non-absorbent formwork)

**Flash point**  
59°C

**Water hazard class**  
2

**GISCODE**  
BTM 60

### Form of delivery

30 l canister  
200 l barrel  
1000 l container

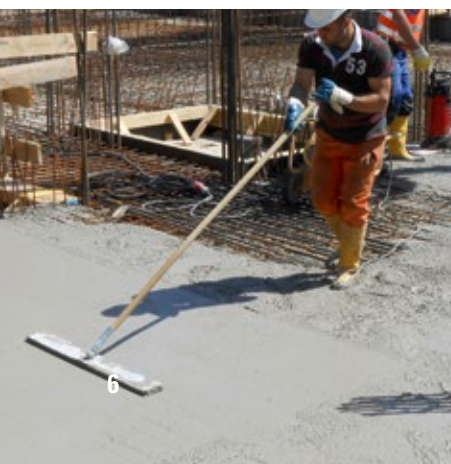


# Emcoril

## The liquid film for your concrete

Protect your fresh concrete against drying too fast. The optimal characteristics of the concrete surface depend immensely on a consistent drying because high temperatures, low humidity or draft can lead to damage of the concrete surface. Emcoril stops the main cause for cracks, cavities or spalls. With the obvious advantages compared to plastic sheets or burlap mats, there is no stack or tunnel effect.

Emcoril can be perfect distributed and saves the constant keeping moist of the concrete in the first days. On top of this, Emcoril saves money through less personnel costs and faster processing in just one working process.



## Emcoril

# Compact pro/top

Concrete curing  
for industrial flooring

## Product properties

- Ready to use, water-based polymer dispersion
- **Emcoril Compact pro:** intermediate concrete curing for the lay-time
- **Emcoril Compact top:** final concrete curing
- Facilitates optimum hydration progress in the concrete layer close to the surface
- Reduces cracking in exposed surfaces resulting from early age shrinkage acc. to EN 13670/DIN 1045-3
- Increases surface tensile strength (improved surface quality)
- Increases water retention in the concrete
- Solvent-free
- Sprayable

## Areas of application

### Compact pro:

- Temporary concrete curing during lay-time
- Smoothing aid
- For temporary curing of hart-grain topping-floors, e.g. MC-Top B
- For application on fresh to matt-damp concrete

### Compact top:

- Final concrete curing
- For indoor and outdoor concrete
- For final curing of hart-grain topping-floors, e.g. MC-Top B
- For application on walkable and ready-smoothed concrete

## Characteristics

<b>Density</b>	approx. 1.00 g/cm <sup>3</sup>
<b>Consumption</b>	150–200 g/m <sup>2</sup>
<b>Drying time</b>	approx. 4.5 h tack-free
<b>Viscosity</b>	13 s
<b>Application conditions</b>	≥ +5 °C – ≤ +30 °C
<b>Water hazard class</b>	1
<b>GISCODE</b>	NBM 10

## Form of delivery

- 30 kg canister
- 200 kg barrel
- 1.000 kg container

## Emcoril

## Protect M lite

Basic concrete curing  
for building constructions at normal  
environmental conditions

## Product properties

- Ready to use, water-based paraffin dispersion
- Especially for normal environmental conditions
- Good barrier effect
- Facilitates optimum hydration progress in the concrete layer close to the surface
- Minimizes cracking resulting from early age shrinkage
- Decreases the rate of carbonation
- Fast drying
- Solvent-free
- Film-forming
- Sprayable

## Areas of application

- Concrete curing for general building constructions, e.g. concrete slabs, walls, foundations, columns
- Concrete curing for non-trafficable surfaces
- For indoor and outdoor concrete
- For application on fresh to matt-damp concrete\*

## Characteristics

Density	0.99 g/cm <sup>3</sup>
Barrier coefficient	approx. 60% (150 g/m <sup>2</sup> ) approx. 85% (250 g/m <sup>2</sup> )
Consumption	150–200 g/m <sup>2</sup>
Drying time	approx. 4.5 h tack-free
pH-value	7
Viscosity	11 s
Application conditions	≥ +5°C – ≤ +25°C
Water hazard class	1
GISCODE	NBM 10

## Form of delivery

30 kg canister  
200 kg barrel  
1.000 kg container (on request)

## Emcoril

## Protect M

Concrete curing  
for building constructions at warm  
environmental conditions

## Product properties

- Ready to use, water-based paraffin dispersion
- Especially for warm environmental conditions
- High barrier effect
- Facilitates optimum hydration progress in the concrete layer close to the surface
- Minimizes cracking resulting from early age shrinkage
- Decreases the rate of carbonation
- Fast drying
- Solvent-free
- Film-forming
- Sprayable
- Low emission level acc.to AgBB
- Tested acc. to ASM C 309, Type A, Class A
- Certified acc. to TL NBM-StB, Type BM

## Areas of application

- Concrete curing for fresh concrete acc. to TL NBM-StB, Type BM
- Concrete curing for general building constructions, e.g. concrete slabs, walls, foundations, columns
- Concrete curing for non-trafficable surfaces without grip requirements
- For indoor and outdoor concrete
- For application on fresh to matt-damp concrete\*

## Characteristics

Density	0.98 g/cm <sup>3</sup>
Barrier coefficient	approx. 86%
Consumption	150–200 g/m <sup>2</sup>
Drying time	approx. 4.5 h tack-free
Viscosity	11 s
Application conditions	≥ +5°C – ≤ +30°C
Water hazard class	1
GISCODE	NBM 10

## Form of delivery

30 kg canister  
200 kg barrel  
1.000 kg container  
(on request)

## Emcoril

## Protect H

Concrete curing  
for building constructions  
after demoulding

## Product properties

- Ready to use, water-based polymer dispersion
- Especially for fresh demoulded concrete
- High barrier effect
- Facilitates optimum hydration progress in the concrete layer close to the surface
- Minimizes cracking resulting from early age shrinkage
- Decreases the rate of carbonation
- Overcoatable with 1K coatings
- Fast drying
- Alkali-resistant
- Solvent-free
- Film-forming
- Does not weather
- Sprayable, rollable, brushable
- Low emission level acc.to AgBB
- Certified acc. to TL NBM-StB, Type BE

## Areas of application

- Concrete curing for fresh demoulded concrete acc. to TL NBM-StB, Type BE
- Concrete curing for general building constructions, e.g. concrete slabs, walls, columns
- Concrete curing for non-trafficable surfaces without grip requirements
- For application on fresh demoulded concrete

## Characteristics

Density	1.00 g/cm <sup>3</sup>
Barrier coefficient	approx. 20%
Consumption	150–200 g/m <sup>2</sup>
Drying time	approx. 4.5 h tack-free
Viscosity	13 s
Application conditions	≥ +5°C – ≤ +30°C
Water hazard class	1
GISCODE	NBM 10

## Form of delivery

30 kg canister  
200 kg barrel  
1.000 kg container



\* As soon as the visible film of water has disappeared and the concrete surface appears matt-damp.

\*\* In case of surface/air temperatures > +25°C wet the surface additional.  
In case of wind and exp. classes XD, XF, XS use wetting already at > +15°C.

# Nafuflex

## Seamless. Jointless. Flexible.

Nafuflex adjusts optimally to the substrate. Even projections, light shafts and connections can be waterproofed with this polymer based bitumen rapidly, easily and above all, safely. Depending on weather conditions and application you can choose between a one component or two component product.

Complementary tools	
<b>Nafuflex GIP</b>	Primer for substrate preparation
<b>Nafuflex GRID 25 NF</b>	Reinforcing inlay
<b>Nafuflex DB</b>	Joint strips
<b>Nafuflex SD</b>	Protection and drainage board



## Nafuflex

### 1K

One component waterproofing

#### Product properties

- Polymer modified bituminous thick coating (PMBC)
- Highly flexible and crack bridging
- Impervious to radon
- Polystyrene-filled
- Environmentally friendly because it's solvent free
- Approved in accordance with EN 15814

#### Areas of application

- Waterproofing acc. to DIN 18533 W1-E, W 2.1-E, W3-E, W4-E
- Adhesive for backing panels, insulation panels and drainage panels

#### Characteristics

##### Processing temperature

≥ +5 °C (air and substrate temperature)

##### Consumption

3.6 l/m<sup>2</sup> (3.6 mm wet, 3 mm dry layer thickness)

4.8 l/m<sup>2</sup> (4.8 mm wet, 4 mm dry layer thickness)

##### Drying time

2–4 days (at +20 °C)

#### Form of delivery

30 l bucket  
(Pallet: 12 buckets)





Nafuflex

## Basic 1

One component waterproofing

### Product properties

- Polymer modified bituminous thick coating (PMBC)
- Extra fast drying properties
- Highly flexible and crack bridging
- Trowelable consistency
- Environmentally friendly because it's solvent free
- Approved in accordance with EN 15814

### Areas of application

- Waterproofing acc. to DIN 18533 W1-E, W 2.1-E, W3-E, W4-E

### Characteristics

#### Processing temperature

≥ +5 °C (air and substrate temperature)

#### Consumption

3.6 l/m<sup>2</sup> (3.6 mm wet, 3 mm dry layer thickness)

4.8 l/m<sup>2</sup> (4.8 mm wet, 4 mm dry layer thickness)

#### Drying time

1–2 days (at +20 °C)

### Form of delivery

- 30 l bucket (Palett: 12 buckets)



Nafuflex

## Basic 2

Two component waterproofing

### Product properties

- Polymer modified bituminous thick coating (PMBC)
- The powder component allows fast drying
- Highly flexible and crack bridging
- Trowelable consistency
- Solvent free, thus environmentally friendly
- Approved in accordance with EN 15814

### Areas of application

- Waterproofing acc. to DIN 18533 W1-E, W 2.1-E, W3-E, W4-E

### Characteristics

#### Processing time

1–2 hours (at +20 °C and 65 % RH)

#### Processing temperature

≥ +5 °C (air and substrate temperature)

#### Consumption

4.8 kg/m<sup>2</sup> (4.2 mm wet, 3 mm dry layer thickness)

6.6 kg/m<sup>2</sup> (5.7 mm wet, 4 mm dry layer thickness)

#### Drying time

1–2 days (at +20 °C)

### Form of delivery

- 28 kg bucket (Palett: 12 buckets)



Nafuflex

## DPK

Two component insulation panel adhesive

### Product properties

- Trowelable consistency
- Highly efficient
- Solvent-free, thus environmentally friendly
- Good adhesion

### Areas of application

- Adhesive for perimeter insulation

### Characteristics

#### Processing time

approx. 60 min. (20 °C, 65 % RH)

#### Processing temperature

≥ +5 °C (Air and substrate temperature)

#### Consumption

1.5–2 kg/m<sup>2</sup>

#### Drying time

1–2 days (at 20 °C)

### Form of delivery

30 kg bucket (Palett: 12 buckets)



## Expert Proof

### Flexible Polymer-Modified Thick Coating Systems

An innovative polymer-based bonding technology brings a new perspective in building waterproofing sector. Expert Proof thick coatings are 100% bitumen-free solutions for waterproofing.

Expert Proof systems make it easier and faster. Thanks to special technology, it is possible to reduced substrate pre-treatment and surface finishing requirements, which result in saving time and minimized site costs. During bad weather conditions, Expert Proof thick coating substantially reduces the weather-related downtime.

Ideal for waterproofing jobs conforming to standards, for plinth sealing in splash water areas and as a barrier sealant or for the surface protection of mineral substrates of all kinds: Expert Proof waterproofing systems offer good adhesion, fast full drying and exceptional protection against water, rising damp and moisture penetration.





## Expert Proof

# one

Bitumen-free waterproofing

### Product properties

- Single component
- High flexible and crack bridging
- Can be plastered and painted over
- UV stable, frost and aging resistant
- Rain resistant after 6 hours
- Colour: light-grey

### Areas of application

- Waterproofing of basement structures
- Refurbishment of old waterproofing
- Repair of bituminous sheets
- Plinth waterproofing
- Waterproofing of balconies and terraces

### Characteristics

#### Workability

>90 min.

#### Processing temperature

$\geq +5^{\circ}\text{C} - \leq +35^{\circ}\text{C}$

#### Consumption

Soil moisture  
2.9 kg/m<sup>2</sup> (2.7 mm wet,  
2 mm dry layer thickness)

Pressing water  
3.6 kg/m<sup>2</sup> (3.3 mm wet, 2.5 mm  
dry layer thickness)

Waterproof concrete  
3.6 kg/m<sup>2</sup> (3.3 mm wet, 2.5 mm  
dry layer thickness)

#### Drying time

24 hours (at 23°C, 50%RH)

### Form of delivery

30 kg bucket  
(Palett: 12 buckets)



## Expert Proof

# eco

Bitumen-free waterproofing

### Product properties

- Two component
- High flexible and crack bridging
- Can be plastered and painted over
- UV stable, frost and aging resistant
- Rain resistant after 4 hours
- Colour: grey

### Areas of application

- Waterproofing of basement structures
- Refurbishment of old waterproofing
- Repair of bituminous sheets
- Waterproofing of watertight constructions
- Plinth waterproofing

### Characteristics

#### Workability

40-60 min.

#### Processing temperature

$\geq +5^{\circ}\text{C} - \leq +35^{\circ}\text{C}$

#### Consumption

Soil moisture  
2.7 kg/m<sup>2</sup> (2.3 mm wet,  
2 mm dry layer thickness)

Pressing water  
3.3 kg/m<sup>2</sup> (2.8 mm wet,  
2.5 mm dry layer thickness)

Waterproof concrete  
4.0 kg/m<sup>2</sup> (3.3 mm wet,  
3 mm dry layer thickness)

#### Drying time

24 hours (at 23°C, 50%RH)

### Form of delivery

20 kg bucket  
(Palett: 12 buckets)



# Expert Proof

Bitumen-free waterproofing

### Product properties

- Two component
- High flexible and crack bridging
- Can be plastered and painted over
- UV stable, frost and aging resistant
- Rain resistant after 4 hours
- Colour: green

### Areas of application

- Waterproofing of basement structures
- Refurbishment of old waterproofing
- Repair of bituminous sheets
- Waterproofing of watertight constructions
- Plinth waterproofing
- Subsequent waterproofing

### Characteristics

#### Workability

approx. 60 min.

#### Processing temperature

$\geq +5^{\circ}\text{C} - \leq +35^{\circ}\text{C}$

#### Consumption

2.8 kg/m<sup>2</sup> (2.4 mm wet,  
2 mm dry layer thickness)

4.2 kg/m<sup>2</sup> (3.7 mm wet,  
3 mm dry layer thickness)

5.5 kg/m<sup>2</sup> (4.8 mm wet,  
4 mm dry layer thickness)

#### Drying time

24 hours (at 23°C, 50%RH)

### Form of delivery

28 kg bucket  
(Palett: 12 buckets)



# Nafuquick

## Facelift for concrete surfaces

The visual appearance of a concrete surface is the result of concrete technology and processing conditions. In addition the impact of a number of external influences, such as climatic mix of outside temperature, air humidity, exposure to sunlight, etc. and the post-treatment and the protection of the finished surfaces, is an additional influence. As you know, things do not always go easy. If concrete imperfections occur, it is good to know how they can be corrected. Thus, with the right concrete cosmetics a perfect appearance can be created later.

Nafuquick are ready-to-use, hydraulic setting fillers, which are used for the easy, fast and clean re-profiling of concrete.





## Nafuquick

## Uni

Medium-fine universal filler  
for concrete cosmetics

## Product properties

- Ready to use, just mix with water
- Polymer modified
- Weather and frost resistant
- Colour fast and light resistant pigmentation
- For single layer applications of up to **20 mm**
- Sprayable with appropriate tool
- Certified according to EN 1504-3, class R1
- Cement grey, concrete grey, medium grey

## Areas of application

- Cosmetic repairs on concrete
- Levelling and smoothing of larger cavities and broken edges on precast concrete elements
- For freshly de-moulded precast elements when using Repacryl
- Filling joints in filigree precast ceilings

## Characteristics

## Grain size

<0.7 mm

## Application thickness

Maximum 20 mm

## Processing time

Approx. 30 minutes (at +20 °C)

## Processing temperature

≥+5 °C – ≤+35 °C

## Consumption (per mm layer thickness)

1.4 kg/m<sup>2</sup>

## Flexural/Compressive strength

After 1 day 0.7/1.6 N/mm<sup>2</sup>

After 28 days 4.4/14 N/mm<sup>2</sup>

## Form of delivery

25 kg bag

(Pallet: 40 bags)



## Nafuquick

Fine standard filler  
for concrete cosmetics

## Product properties

- Ready to use, just mix with water
- Polymer modified
- Weather and frost resistant
- Colour fast and light resistant pigmentation
- Single layer applications of up to **6 mm**
- Sprayable with appropriate tool
- Certified according to EN 1504-3, class R1
- Light, grey, concrete grey, medium grey

## Areas of application

- For filling large scale areas on concrete and fairfaced concrete
- Smoothing of precast concrete elements
- For freshly de-moduled precast elements when using Repacryl

## Characteristics

## Application thickness

Maximum 6 mm

## Processing time

Approx. 30 minutes (at +20 °C)

## Processing temperature

≥+5 °C – ≤+35 °C

## Consumption (per mm layer thickness)

Dry mortar 1.25 kg/m<sup>2</sup>

Fresh mortar 1.66 kg/m<sup>2</sup>

## Flexural/Compressive strength

After 1 day 0.9/2.2 N/mm<sup>2</sup>

After 28 days 4.3/14.2 N/mm<sup>2</sup>

## Form of delivery

25 kg bag

(Pallet: 40 bags)



## Nafuquick

## HT / HT fine

Fine and super-fine thermal filler  
for concrete cosmetics

## Product properties

- Ready to use, just mix with water
- Polymer modified
- Highly water retention
- Applicable at substrate temperatures up to +70 °C
- Stable in wall and overhead application
- Non flammable acc. to EN 13501, class A1
- Certified acc. to EN 1504-3, class R1
- Concrete-grey

## Anwendungsgebiete

- Re-profiling of warm concrete
- For small and large area fillings
- For broken edges
- For indoor and outdoor

## Characteristics

## Grain size

HT: <0.35 mm

HT fine: <0.25 mm

## Application thickness

HT: 1 – 15 mm

HT fine: 1 – 10 mm

## Processing time

Approx. 30 minutes (at +20 °C)

## Processing temperature

≥+5 °C – ≤+35 °C (air/material)

≥+5 °C – ≤+70 °C (substrate)

## Consumption

1.25 kg/m<sup>2</sup> (per mm layer thickness)

## Flexural/Compressive strength

After 1 day 1.0/2.5 N/mm<sup>2</sup>

After 7 days 3.0/8.0 N/mm<sup>2</sup>

After 28 days 4.0/10.0 N/mm<sup>2</sup>

## Form of delivery

25 kg bag

(Pallet: 35 bags)



# Emcefix

## Facelift for concrete surfaces

„Failed“ concrete and exposed concrete surfaces damage not only the visual impact, but also the acceptance of the building and the type of construction, and thus represent an economic risk for architects, planners and owners. It is all the more important to use the opportunities of the modern cosmetics of MC and reprofile corresponding defects expertly. There are a number of solutions that are developed for different objectives.

If the surface should be really perfect, our concrete cosmetic system Emcefix is used. The market-wide unique variety of colors of the Emcefix products also offers a maximum of creative freedom.





## Emcefix

# Haftbrücke

Mineral bonding agent for concrete cosmetics

**Product properties**

- Ready to use, just mix with water
- One component
- Solvent free
- Fast reworkable
- Simple processing
- Secure connectivity
- Certified according to EN 1504-3, class R2
- Grey

**Areas of application**

- Bonding agent for concrete cosmetics on mineral substrates

**Characteristics****Processing time**

&gt; 15 minutes (at +20 °C)

**Processing temperature** $\geq +5^{\circ}\text{C} - \leq +35^{\circ}\text{C}$ **Consumption**1.1 kg/m<sup>2</sup> per mm layer thickness**Form of delivery**

5 kg bucket  
(Pallet: 60 buckets)



## Emcefixl

# G lang & G rapid

Coarse fillers for concrete cosmetics

**Product properties**

- Ready to use, just mix with water
- For single layer applications of up to **25 mm**, of up to **50 mm** double layer
- For small scale works up to 1 m<sup>2</sup>
- Polymer modified
- Weather and frost resistant
- Suitable for overhead application
- Certified according to EN 1504-3, class R2

**Areas of application**

- Repair of small imperfections in concrete and fairfaced concrete, e.g: honeycombs, damaged edges and corners, mould lines, taper holes
- Small scale works up to 1 m<sup>2</sup>

**Characteristics****Grain size**

&lt;2.0 mm

**Application thickness**

6–25 mm single layer

**Processing time**

G lang: approx. 20 minutes (at +20 °C)

G rapid: approx. 7 minutes (at +20 °C)

**Consumption**1.8 kg/m<sup>2</sup> per mm layer thickness**Flexural/Compressive strength****G lang:** (N/mm<sup>2</sup>)

After 1 day 2.3/6.6

After 7 days 3.0/21.0

After 28 days 4.8/29.5

**G rapid:** (N/mm<sup>2</sup>)

After 1 days 2.8/6.6

After 7 days 4.1/24.6

After 28 days 5.1/29.0

**Form of delivery**

15 kg bucket (Pallet: 33 buckets)

25 kg bag (Pallet: 40 bags)



## Emcefix

# G extra & G ultra

Fibre reinforced coarse fillers for concrete cosmetics

**Product properties**

- Ready to use, just mix with water
- Polymer modified
- Fibre reinforced
- Weather and frost resistant
- Thermal compatibility acc. to EN 13687-3
- Stable in application on walls and overhead work
- Certified according to EN 1504-3, class R2

**Areas of application**

- Repair of small and big imperfections in concrete and fairfaced concrete

**Characteristics****Grain size**

&lt;2.0 mm

**Application thickness**

G extra: 6–25 mm single layer  
(with Emcefix-Haftbrücke),  
50 mm double layer

G ultra: 6–40 mm single layer  
(bonding agent is integrated),  
80 mm double layer

**Processing time**

Approx. 30 minutes (at +20 °C)

**Consumption**

(per mm layer thickness)

G extra: 1.6 kg/m<sup>2</sup>G ultra: 1.52 kg/m<sup>2</sup>**Flexural/Compressive strength****G extra:** (N/mm<sup>2</sup>)

After 1 day 5.0/26.0

After 7 days 7.0/50.0

After 28 days 8.0/55.0

**G ultra:** (N/mm<sup>2</sup>)

After 1 day 3.9/23.0

After 7 days 5.1/37.0

After 28 days 6.0/42.0

**Form of delivery**

25 kg bag  
(Pallet: 40 bags)



## Emcefix

# F lang & F rapid

Fine fillers for concrete cosmetics

## Product properties

- Ready to use, just mix with water
- Polymer modified
- Thermal resistance acc. to EN 13687-3
- Colour fast and light resistant pigmentation
- For single layer applications of up to **6 mm**
- Suitable for overhead application
- Applicable for spraying with appropriate tool
- Certified according to EN 1504-3, class R1
- F rapid: grey, concrete grey, medium grey
- F lang: white, white grey, stone grey, grey, concrete grey, medium grey, anthracite

## Areas of application

- For large scale fine fillings on concrete and fair faced concrete
- For fine fillings and repairs on precast concrete elements

## Characteristics

### Grain size

&lt;0.25 mm

### Application thickness

1 – 6 mm

### Processing time

F lang: approx. 30 minutes (at +20 °C)

F rapid: approx. 15 minutes (at +10 °C)

### Flexural/Compressive strength

**G lang:** (N/mm<sup>2</sup>)

After 1 day 1.5/2.0

After 7 days 3.2/10.8

After 28 days 6.2/23.0

**G rapid:** (N/mm<sup>2</sup>)

After 1 day 2.3/4.0

After 7 days 4.0/8.0

After 28 days 6.2/20.0

## Form of delivery

12 kg bucket (Pallet: 33 buckets)

25 kg bag (Pallet: 35 bags)



## Emcefix

# F extra fein

Super fine filler for concrete cosmetics

## Product properties

- Ready to use, just mix with water
- Polymer modified
- Weather and frost resistant
- Colour fast and light resistant pigmentation
- For single layer applications of up to **3 mm**
- Suitable for overhead application
- Certified according to EN 1504-3, class R1
- Light grey, concrete grey, medium grey

## Areas of application

- For large scale fine fillings on concrete and fairfaced concrete
- For fine fillings and repairs on precast concrete elements

## Characteristics

### Grain size

&lt;0.125 mm

### Application thickness

0.5 – 3 mm

### Processing time

Approx. 30 minutes (at +20 °C)

### Consumption

Approx. 1.5 kg/m<sup>2</sup> per mm layer thickness

### Flexural/Compressive

**strength** (N/mm<sup>2</sup>)

After 1 day 1.9/7.2

After 7 days 2.6/14.8

After 28 days 5.0/23.4

## Form of delivery

25 kg bag

(Pallet: 35 bags)







# Fluresit and Murafan

## Concrete filler – fast and enhanced

You want to enhance your concrete filler, accelerate its hardening or make it smoother - our concrete cosmetic additives help you with every request.

## Fluresit

### 4-DS

Hardening accelerator

#### Product properties

- Chloride-free
- Liquid
- Fast hardening
- Sealing up
- With water dilutable
- Impacts hardening
- No impact of the colour
- Water hazard class: 1

#### Areas of application

- For the acceleration of mineral bonding agents
- For the acceleration of cosmetic fillers
- For the acceleration of mortars
- For underwater concrete works
- Winter conditions

#### Characteristics

##### Processing time

approx. 5 min  
(mixing ratio 1:7 Fluresit 4-DS:water)

##### Processing temperature

≥ +5°C – ≤ +30°C

##### Form of delivery

12 kg canister  
35 kg canister  
200 kg barrel

## Murafan

### 39

Polymer additive

#### Product properties

- Improves adhesion of cosmetic fillers on cement-based substrates
- Increases elasticity
- Prevents stress cracks
- Improves workability
- Increases oil impermeability

#### Areas of application

- For enhancement of fillers
- Smoothing
- For creation of bonding agent in combination with fillers

#### Characteristics

##### Mixing ratio

For bonding agent:  
1:2 (Murafan 39 : water)

For mortar: 1:4  
(Murafan 39 : water)

For cement screeds:  
1:6 (Murafan 39 : water)

##### Form of delivery

11 kg canister  
30 kg canister  
200 kg barrel

## Tools

# MC-Top and MC-Concretefinish

Concrete cosmetics and retouch – professional handling.

Single tools and all-in-one sets for the perfect application of our cosmetic fillers.



## MC-Top Rubber

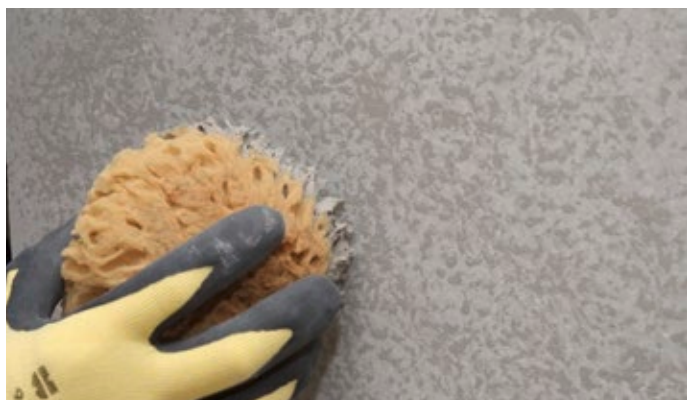
For applying the fine and super-fine MC concrete cosmetic fillers, especially for pore and hole filling works, MC-Top Rubber is particularly well suited.

The concrete surface can be processed without any residue and without surplus material.



## MC-Top Sponge

The cosmetic rubbing sponge MC-Top Sponge consists of a solid foam, a moss and a soft foam rubber layer. The moss rubber layer (black) facilitates a clean edge finish. The soft foam rubber (white) is more likely to be used to rub dry surfaces of MC fine fillers.



## MC-Top Natural Sponge

For retouching concrete surfaces with Repacryl MC-Top Natural Sponge is used in the dabbing process.



## MC-Concretefinish Set

The all-in-one set includes all the tools specifically designed for Concrete cosmetics and Concrete retouch. The complete set consists of

- Smoothing trowel, steel trowel
- MC-Top Rubber
- MC-Top Sponge
- Grinder incl. mash and pad
- MC-Top Natural Sponge
- Protecting gloves
- Protecting glasses

# Repacryl

## Achieve exposed concrete optics

Unwished colour differences, streaks or cloud formation and general voids in exposed concrete are very disturbing for the appearance of the surface. The Concrete retouch and Concrete glaze techniques of MC can restore a uniform and natural appearance without compromising the character of the concrete.

Repacryl is the suitable product for this. The Concrete retouch techniques is used partially, the Concrete glaze is used on the full-surface. With the three intermixable and water-dilutable shades of Repacryl, it is possible to create almost any desired concrete colour and any degree of coverage.

# Repacryl

Coloured concrete retouch/glaze

## Product properties

- Based on a copolymer dispersion, with water dilutable
- Open to water vapour diffusion acc. to EN 1504-2
- UV-stable, weather and light-resistant due to mineral pigments
- Colour stable, class B1 acc. to BFS guideline Nr. 26
- Moderately reduced water absorption, class W1 acc. to EN 1062-3
- Matt, available in three grey, miscible colours
- Suitable as concrete cosmetic additive, good water retention
- Non-flammable, Material class A2-s1; d0 acc. to EN 13501-1
- Application by retouching, rolling and spraying
- Colour: pale grey, concrete grey, light grey

## Areas of application

### As Concrete retouch and glaze

- For the coloured finish of exposed concrete
- Suitable for indoor and outdoor surfaces
- For outdoor exposed surfaces acc. to EN 1504-2, principle 1, procedure 1.3 in combination with MC-Color Proof only

### As Concrete cosmetic additive

- For enhancement of fine and super fine cosmetic fillers
- For colour adjustment of fine and super fine cosmetic fillers
- For improvement of workability and adhesion of cosmetic fillers
- For application on warm concrete
- For reduction of stress cracks

### As mortar additive

- Slurrying for pipe sleeves

## Characteristics

### Mixing ratio

Concrete retouch/glaze:	2:1, 1:1-4 (Repacryl : water)
Cosmetic additive	1:1-3 (Repacryl : water)

### Processing temperature

≥ +5 °C – ≤ +35 °C

### Tack-free

> 15 min. (depending on substrate)

### Rain proof

2–4 h depending on temperature

### Consumption

approx. 150 g/m<sup>2</sup> Repacryl-mix, single layer depending on substrate

### Form of delivery

15 kg bucket  
25 kg bucket







# Nafufill

## The all-round problem-solver – especially when things get hot

When repairing concrete components, fire protection requirements can often play as big a role as structural effectiveness. While conventional concrete replacement systems soon reach the limits of their suitability, Nafufill enables such specifications to be met with ease!

With this concrete replacement system you can verifiably fulfil all the concrete-related technological requirements pertaining to corrosion protection, to bonding and fire protection of the reinforcement, in engineering, industrial, tunnelling, civil and residential constructions.



Zentrifix

## KMH

Mineral corrosion-protection  
coating and bond coat

### Product properties

- Cement-based
- Single-component
- Quickly overworkable
- Tested in accordance with ZTV-ING, TL/TP PCC BE, DAfStb Repair guideline, classes M2/M3
- Certified acc. to EN 1504-3

### Areas of application

- Corrosion protection for reinforcement
- Bond coat suitable for interior and exterior applications
- PCC I and PCC II approved to ZTV-ING
- Approved to DAfStb Repair guideline, classes M2/M3
- Certified to EN 1504-7 for Principle 11, Procedure 11.1

### Characteristics

#### Processing time

75 min at + 5 °C  
60 min at + 20 °C  
45 min at + 30 °C

#### Overworking times

approx. 3 h between 1st and 2nd  
corrosion protection coating  
approx. 3 h between 2nd corrosion pro-  
tection coating and bond coat application

#### Processing temperature

≥ +5 °C – ≤ +35 °C air/material/  
substrate temperature

#### Consumption

Dry material 1.70 kg/dm<sup>3</sup>

#### Mixing ratio

100 : 18–19 PBW Zentrifix KMH : Water

### Form of delivery

2 x 5 kg bags (Pallet: 96 bags)  
20 kg bag (Pallet: 40 bags)



## Nafufill

**KM 250**

Fire-resistant, fibre-reinforced  
PCC/SPCC concrete replacement

**Product properties**

- Single-component
- For trowelling and wet spray application
- Structurally strengthening
- High resistance to carbonation
- Resistant to freeze-thaw and de-icing salts; chloride-proof
- Non-flammable to EN 13501-1, class A1
- Fire-resistant
- Fire rating F90/F120
- Certified acc. to EN 1504-3, class R4

**Areas of application**

- SPCC/PCC II acc. to ZTV-ING
- SPCC/PCC acc. to ZTV-W LB 219 for exp. classes XC 1-4, XF 1-4, XW 1-2, XD 1-3, XS 1-3, XM 1, XA 1-2
- SPCC/PCC acc. to DAfStb Repair guideline
- For the repair principle of cathodic corrosion protection of steel in concrete
- Certified acc. to EN 1504-3 for Principles 3, 4, 7, Procedures 3.1, 3.3, 4.4, 7.1, 7.2

**Characteristics****Processing time**

60 min at + 5 °C  
45 min at + 20 °C  
30 min at + 30 °C

**Processing temperature**

≥+5 °C – ≤+30 °C air/material/  
substrate temperature

**Layer thickness range**

6–30 mm per coating  
60 mm total layer thickness

**Max. grain size**

2 mm

**Consumption**

PCC dry mortar 1.80 kg/m<sup>2</sup>/mm  
SPCC dry mortar 1.85 kg/m<sup>2</sup>/mm

**Mixing ratio**

100: 15–16 PBW Nafufill KM 250 : Water

**Flexural/Compressive strength**

**PCC :** (N/mm<sup>2</sup>)  
After 2 days 4.7/34.4  
After 7 days 5.8/50.4  
After 28 days 8.5/55.0

**SPCC :** (N/mm<sup>2</sup>)  
After 7 days 5.3/57.5  
After 28 days 9.3/68.1

**Form of delivery**

25 kg bag (Pallet: 40 bags)



## Nafufill

**KM 103**

Fine mortar for levelling of  
concrete surfaces

**Product properties**

- Single-component
- Polymer-modified
- For trowelling and spray application
- High water retention
- Resistant to temperature changes and frost-thaw
- Approved acc. to ZTV-ING, TL/TP BE PCC, DIN V 18026 for classes OS 4, OS 5a
- Certified acc. to EN 1504-3, class R2

**Areas of application**

- PCC fine filler for non-accessible, non-trafficable interior and exterior surfaces
- For filling of pores, blowholes and roughness depressions
- Principle 3, Procedures 3.1, 3.3

**Characteristics****Processing time**

60 min at + 5 °C  
45 min at + 20 °C  
30 min at + 30 °C  
1 hour wait time between  
1st and 2nd coating

**Overcoatable**

3 hours wait time; with  
MC-Color Flair pure and pro

**Processing temperature**

≥+5 °C – ≤+30 °C air/material/  
substrate temperature

**Layer thickness**

**as full-area filler**  
1–3 mm per layer  
3 mm total layer thickness

**Max. grain size**

0.2 mm

**Consumption**

Dry mortar 1.75 kg/m<sup>2</sup>/mm as skim coat  
Dry mortar 0.8–1.5 kg/m<sup>2</sup>/mm as  
scratch, pore and blowhole filler

**Mixing ratio**

100 : 17–18 PBW Nafufill KM 103 : Water

**Flexural/Compressive strength:** (N/mm<sup>2</sup>)  
After 2 days 5.0/17.0  
After 7 days 9.0/27.0  
After 28 days 10.1/32.8

**Form of delivery**

25 kg bag (Pallet: 40 bags)



## Nafufill

**KM 110**

Fine mortar for levelling of  
concrete surfaces

**Product properties**

- Single-component
- Polymer-modified
- For trowelling and spray application
- High water retention
- Resistant to temperature changes and frost-thaw
- For use as a scratch coat
- Approved acc. to ZTV-ING, TL/TP BE PCC, DIN V 18026 for classes OS 4, OS 5a
- Certified acc. to EN 1504-3, class R2

**Areas of application**

- PCC fine filler for non-accessible, non-trafficable interior and exterior surfaces
- Levelling of large roughness depressions
- Principle 3, Procedures 3.1, 3.3

**Characteristics****Processing time**

60 min at + 5 °C  
45 min at + 20 °C  
30 min at + 30 °C  
1 hour wait time between 1st and  
2nd coating

**Overcoatable**

3 hours wait time; with  
MC-Color Flair pure and pro

**Processing temperature**

≥+5 °C – ≤+30 °C air/material/  
substrate temperature

**Layer thickness range**

**as full-area filler**  
2–10 mm per layer  
10 mm total layer thickness

**Max. grain size**

1 mm

**Consumption**

Dry mortar 1.75 kg/m<sup>2</sup>/mm as skim coat

**Mixing ratio**

100 : 17–18 PBW Nafufill KM 103 : Water

**Flexural/Compressive strength:** (N/mm<sup>2</sup>)  
After 2 days 4.0/20.0  
After 7 days 6.5/32.0  
After 28 days 7.3/38.9

**Form of delivery**

25 kg bag (Pallet: 40 bags)





# MC-Color

## Concrete protection and aesthetic shape

The demands placed on modern surface protection systems nowadays go beyond pure concrete preservation: Hence MC-Color systems also fulfil aesthetic requirements such as highlighting the concrete character through transparent impregnations or the coloured conversion of concrete surfaces.

With the product lines MC-Color Proof and MC-Color Flair you now have at your disposal a choice of high-performance coatings: Whether transparent or pigmented, and with or without graffiti protection – the three performance variants “pure”, “pro”, and “vision” ensure you will always find the right solution for your particular application.

MC-Color Proof	MC-Color Proof pure	MC-Color Proof pro	MC-Color Proof vision
Impregnation + transparent coating	Impregnation and glazing base	Concrete protection	Concrete and graffiti protection

MC-Color Flair	MC-Color Flair pure	MC-Color Flair pro	MC-Color Flair vision
Pigmented coating	Coloured concrete protection	Coloured, dirt-repelling concrete protection	Coloured concrete and graffiti protection



## MC-Color

**Proof pure**

Transparent copolymer dispersion with very good weathering resistance and low soiling tendency

- Ready to use
- Impregnation of concrete surfaces
- Transparent base product for glaze creation
- Open to water vapour diffusion ( $s_{d,H_2O} = 0.2 \text{ m}$ )
- Carbonation-resistant ( $s_{d,CO_2} = 75 \text{ m}$ )
- Water repellent
- Certified acc. to EN 1504-2



## MC-Color

**Proof pro**

Transparent copolymer dispersion with very good weathering resistance and extremely low soiling tendency

- Ready to use
- Concrete protection for weather-exposed exterior surfaces
- Open to water vapour diffusion ( $s_{d,H_2O} = 0.27 \text{ m}$ )
- Carbonation-resistant ( $s_{d,CO_2} = 222 \text{ m}$ )
- Water repellent
- Certified acc. to EN 1504-2, DIN V 18026



## MC-Color

**Proof vision**

Transparent, hydrophobic polyurethane-polymer combination with integrated Easy-to-Clean technology

- Two-component
- Concrete protection for weather-exposed exterior surfaces
- Permanent graffiti protection for concrete
- Open to water vapour diffusion ( $s_{d,H_2O} = 1.2 \text{ m}$ )
- Carbonation-resistant ( $s_{d,CO_2} = 645 \text{ m}$ )
- Water repellent
- Certified acc. to EN 1504-2, DIN V 18026, TL/TP AGS, ZTV-ING, Part 5 Tunnelling



## MC-Color

**Flair pure**

Pigmented copolymer dispersion with good weathering resistance and low soiling tendency

- Ready to use
- Concrete protection for weather-exposed exterior surfaces
- Open to water vapour diffusion ( $s_{d,H_2O} = 0.2 \text{ m}$ )
- Carbonation-resistant ( $s_{d,CO_2} = 270 \text{ m}$ )
- Water repellent
- Certified acc. to EN 1504-2, DIN V 18026



## MC-Color

**Flair pro**

Pigmented copolymer dispersion based on "Core-Shell" technology with excellent colour stability and extremely low soiling tendency

- Ready to use
- Concrete protection for weather-exposed exterior surfaces
- Open to water vapour diffusion ( $s_{d,H_2O} = 0.2 \text{ m}$ )
- Carbonation-resistant ( $s_{d,CO_2} = 316 \text{ m}$ )
- Water repellent
- Certified acc. to EN 1504-2, DIN V 18026



## MC-Color

**Flair vision**

Pigmented, hydrophobic polyurethane-polymer combination with exceptional colour stability and integrated Easy-to-Clean technology

- Two-component
- Concrete protection for weather-exposed exterior surfaces
- Permanent graffiti protection for concrete
- Open to water vapour diffusion ( $s_{d,H_2O} = 0.8 \text{ m}$ )
- Carbonation-resistant ( $s_{d,CO_2} = 677 \text{ m}$ )
- Water repellent
- Certified acc. to EN 1504-2, DIN V 18026



# Reparoxyd

## Early resilience and high wear resistance

Wherever horizontal repairs – concrete floors, steps, curbs or railway platform edges – need to withstand high mechanical stress, the Reparoxyd range of products offers a lightning-fast solution. These two-component acrylic mortars are easy to mix and offer good flowability. A trowelable consistency can also be created by simply reducing the liquid content.

## A solid basis

MC-Top Primer has been especially formulated as the bond coat for Reparoxyd products.

- For absorbent substrates
- For non-absorbent substrates

## Reparoxyd SB

Fine repair mortars

### Product properties

- Two-component
- Highly wear-resistant
- Water-impermeable
- High early and final strength values
- Workable even at temperatures below freezing
- For repair surface areas up to max. 1 m<sup>2</sup>
- For layer thicknesses up to 20 mm
- Certified acc. to EN 1504-2, EN 13813

### Areas of application

Repair of

- Chips and defects
- Broken corners and edges
- Concrete floors, stairs, curbs, railway platforms

and

- Refastening of dislodged lifting bolts
- Manufacture of polymer-modified mortars
- Filling of anchor holes

### Characteristics

#### Grain size

0–0.4 mm

#### Processing time

approx. 10 minutes (at +20 °C)

approx. 15 minutes (at +0 °C)

approx. 25 minutes (at -10 °C)

#### Processing temperature

≥ -10 °C – ≤ +20 °C (air and substrate)

≥ +5 °C (material temperature)

#### Flexural/Compressive

**strength:** (N/mm<sup>2</sup>)

After 2 h 21/68

Final value 23/77

### Form of delivery

5 kg bucket  
(Pallet: 60 buckets)



## Reparoxyd WG

Coarse repair mortar

### Product properties

- Two-component
- Highly wear-resistant
- Water-impermeable
- High early and final strength values
- Workable even at temperatures below freezing
- For repair surface areas up to max. 2 m<sup>2</sup>
- For layer thicknesses up to 40 mm
- Certified acc. to EN 1504-2, EN 13813

### Areas of application

Repair of

- Chips and defects
- Concrete floors, stairs, curbs, railway platforms
- Broken corners and edges

and

- Refastening of dislodged lifting bolts
- Manufacture of polymer-modified mortars
- Filling of anchor holes

### Eigenschaften

#### Grain size

0–2 mm

#### Processing time

approx. 10 minutes (at +20 °C)

approx. 15 minutes (at +0 °C)

approx. 25 minutes (at -10 °C)

#### Processing temperature

≥ -10 °C – ≤ +20 °C (air and substrate)

≥ +5 °C (material temperature)

#### Flexural/Compressive

**strength:** (N/mm<sup>2</sup>)

After 2 h 15/44

Final value 28/60

### Form of delivery

16.85 kg bucket  
(Pallet: 24 buckets)









## Nisiwa

### Water repellent, invisible concrete protection

Hydrophobic impregnation is an excellent and highly effective means of reducing capillary water transport in mineral building materials such as natural stone, brick, render and concrete. Once they contain water, pores become prone to frost damage. Salt and corrosive gases may also penetrate the fabric. And the presence of water in the pores also gives rise to biological growth in the form of algae, lichens and fungi.

With Nisiwa hydrophobic agents, pores near to the surface and susceptible to capillary absorption are temporarily impregnated to prevent the penetration of moisture. At the same time, the surface remains open to water vapour diffusion. Water and its dissolved and entrained contaminants are repelled by the concrete as long as the hydrophobic treatment remains active.



## Nisiwa

## C

Solvent-free hydrophobic agent with high penetration power

## Product properties

- Silane-based hydrophobic cream
- High penetration power, Class II per EN 1504-2
- Ready to use
- Application without loss (thixotropic) mostly in one layer
- High degree of protection against frost and de-icing salts
- Open to water vapour diffusion
- High resistance to alkalis
- Water-based, solvent-free
- Non-film-forming
- Certified acc. to EN 1504-2

## Areas of application

- Concrete, reinforced concrete, clinker and masonry brick
- Cement-based or cosmetic-filled surfaces

## Characteristics

## Depth of penetration

>10 mm, Class II per EN 1504-2

## Processing temperature

≥+5°C – ≤+30°C

## Consumption

100-150 g/m<sup>2</sup>  
on normal absorbent substrates  
max. 400 g/m<sup>2</sup>  
on highly absorbent substrates

## Form of delivery

10 kg bucket  
25 kg bucket (on request)



## Nisiwa

## L

Solvent-free hydrophobic agent with high penetration power

## Product properties

- Water-based, silane-based hydrophobic agent
- High penetration power, Class II per EN 1504-2
- Reduces capillary water absorption
- Exceptionally water-repellent
- Dries fast to a non-stick finish
- Invisible, non-film-forming
- Increases resistance to frost and de-icing salts
- Reduces efflorescence and soiling of concrete surfaces
- Reduces algae and moss growth
- Impervious to driving rain
- Alkali-resistant
- Suitable for brushing and spraying
- Ready to use

## Areas of application

- Alkaline, cement-based substrates
- Precast concrete
- Fair-faced concrete
- Cosmetic-filled surfaces, e.g. with Emcefix or Nafuquick
- Retouched and glazed surfaces, e.g. with Repacryl

## Characteristics

## Depth of penetration

>10 mm, Class II per EN 1504-2

## Processing temperature

≥+5°C – ≤+30°C

## Consumption

100-150 ml/m<sup>2</sup>

## Form of delivery

10 l canister  
30 l canister  
200 l barrel

## Nisiwa

## SN

Solvent-based hydrophobic agent with medium penetration power

## Product properties

- Siloxane-based hydrophobic agent
- Medium penetration power, Class I per EN 1504-2
- Invisible, non-film-forming
- Impervious to driving rain
- Dries fast to a non-stick finish
- Suitable for brushing and spraying
- Reduces efflorescence and soiling of concrete surfaces
- Increases resistance to frost and de-icing salts
- Solvent-based
- Alkali-resistant
- Applicable in two layers

## Areas of application

- Alkaline, cement-based substrates
- Precast concrete
- Fair-faced concrete
- Cosmetic-filled surfaces, e.g. with Emcefix or Nafuquick
- Retouched and glazed surfaces, e.g. with Repacryl
- Roof tiles

## Characteristics

## Depth of penetration

<10 mm, Class I per EN 1504-2

## Processing temperature

≥+5°C – ≤+30°C

## Drying time

10-15 minutes

## Consumption

200-500 ml/m<sup>2</sup>

## Form of delivery

25 l canister



# Emckrete

## Transferring strengths

Whether for underfilling of ceiling or wall connections, for grouting steel components in concrete or rigid joints between precast elements, for precision machinery, bridge bearings, crane rails, turbines, overhead contact line masts or steel constructions, the hydraulic setting grouts Emckrete provide the appropriate system for your requirements. Trust the high initial and final strengths and rapid hardening even at low temperatures, as well as resistance to oil, water and deicing salts. Constant traction with superior bonding to the substrate.



## Emckrete

# 60 A / 60 F / 60 EF

Grout concrete and grout mortar

## Product properties

- Ready to use, just mix with water
- Highly flowable
- High early and final strengths
- Volume stable
- High adhesive tensile strength on properly treated concrete and brick surfaces
- Chloride free
- Resistant to frost and de-icing salts acc. to CDF test
- Certified as grouting concrete and mortar according to DAfStB directive
- Certified acc. to EN 1504-6

## Areas of application

- Grouting of precision machinery, machine foundation, bridge bearings, crane rails, turbines, engines, steel constructions
- Grouting of fastening bolts, steel elements in concrete, rigid joints between precast elements or between precast elements and existing concrete.
- Exposure class: XC 1-4; XD 1-3; XS 1-3; XA 1-3; XF 1-4

## Characteristics

### Grain size

- 60 A 0–8 mm
- 60 F 0–3 mm
- 60 EF 0–1,2 mm

### Thickness of grouting

- 60 A 24–200 mm
- 60 F 10–75 mm
- 60 EF 5–25 mm

### Strength category

- 60 A C 70/85
- 60 F C 50/60
- 60 EF C 50/60

### Processing time

Approx. 45 minutes (at +20 °C)

### Consumption

2.09 kg/dm<sup>3</sup>

## Form of delivery

25 kg bag  
(Pallet: 40 bags)



## Emcecrete

**70 F**

High early and final strengths grout

**Product properties**

- Ready to use, just mix with water
- Highly flowable
- Extreme high early and final strengths
- Shrinkage free
- Chloride free
- High tensile strength
- Water impermeable
- Certified acc. to EN 1504-6

**Areas of application**

For grouting works of:

- Rigid precast joints
- Precision machines, machine foundations
- Anchor screws, fixing and base plates, steel and concrete supports
- Bridge bearings, crane rails
- Steel constructions, fastening bolts, steel elements in concrete
- Wind turbines

**Characteristics****Grain size**

0–3 mm

**Grouting thickness**

10–75 mm

**Processing time**

&lt;30 minutes (at +20 °C)

**Consumption**Approx. 2.05 kg/dm<sup>2</sup>**Flexural/Compressive strength\***

	(N/mm <sup>2</sup> )
After 1 hour	≥ 2.0/8.0
After 4 hours	≥ 3.0/11.0
After 1 day	≥ 5.5/25.0
After 7 days	≥ 6.0/55.0
After 28 days	≥ 7.5/70.0

**Form of delivery**25 kg bag  
(Pallet: 40 bags)

## Emcecrete

**100 F**

High performance grouting mortar

**Product properties**

- Ready to use, just mix with water
- Highly flowable
- High initial and final strengths
- Shrink compensated
- Chloride free
- High adhesive tensile strength
- Water impermeable
- Resistant to frost and de-icing salts acc. to CDF test
- Certified acc. to DAfStb guideline

**Areas of application**

For grouting works of:

- Rigid precast joints
- Precision machines, machine foundations
- Anchor screws, fixing and base plates, steel and concrete supports
- Bridge bearings, crane rails
- Steel constructions, fastening bolts, steel elements in concrete
- Wind turbines

**Characteristics****Grain size**

0–3 mm

**Grouting thickness**

10–75 mm

**Processing time**

approx. 45 min. (at +20 °C)

**Consumption**2,05 kg/dm<sup>3</sup>**Flexural/Compressive strength**

	(N/mm <sup>2</sup> )
After 1 day	7.5/42.0
After 7 days	11.5/100.0
After 28 days	14.0/120.0

**Form of delivery**25 kg bag  
(palett: 40 bags)

## Emcecrete

**DBS 5-F**

Fast grouting mortar

**Product properties**

- Fast hardening grouting mortar
- Easy to mix
- Highly flowable
- Shrinkage free
- Chloride free
- Frost resistant
- Loadable within minutes
- No separation tendency
- Good adhesion to concrete and steel
- Certified acc. to EN 1504-6

**Areas of application**

- Grouting work where early loading is required
- Grouting of rail pylons of Deutsche Bahn AG
- Fence construction

**Characteristics****Grain size**

0–4 mm

**Processing time**

3–5 minutes (at +20 °C)

**Processing temperature**

≥ +5 °C – ≤ +30 °C

**Consumption**2.29 kg/dm<sup>3</sup>**Flexural/Compressive strength**

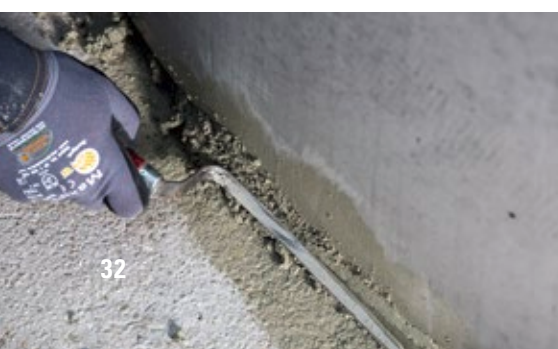
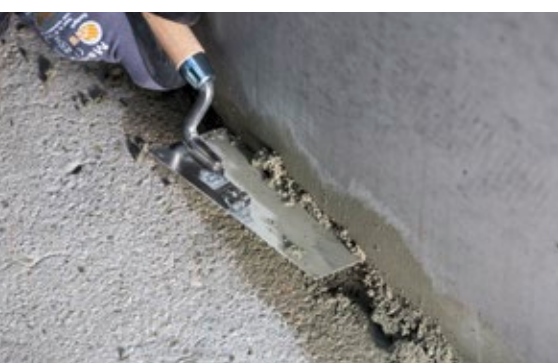
	(N/mm <sup>2</sup> )
After 1 hour	2.0/10.0
After 24 hours	4.0/16.0
After 28 days	7.0/51.0

**Form of delivery**25 kg bag  
(Pallet: 40 bags)

# Emcekrete

## Fill up and closing

The products of the Emcekrete UFM and MFT line are a fast and uncomplicated solution for filling up of ceilings and wall stop ends, for closing fixed joints of precast elements. They are ready to use and steady, have a high early and final strength and a high adhesive tensile strength.



## Emcekrete

# UFM

## Underfilling mortars

### Product properties

- Ready to use, just mix with water
- High early and final strengths
- Stable
- Volume stable
- High adhesive tensile strength on properly treated concrete and brick surfaces
- Chloride free
- Certified acc. to EN 1504-3, class R3

### Areas of application

- Underpacking ceiling / wall connections
- Filling rigid joints between precast elements

### Characteristics

#### Grain size

UFM 1	0–1.2 mm
UFM 3	0–3.0 mm

#### Thickness of grouting

UFM 1	< 10 mm
UFM 3	10–60 mm

#### Consumption

UFM 1	1.99 kg/dm <sup>3</sup>
UFM 3	2.0 kg/dm <sup>3</sup>

#### Flexural/Compressive strength

<b>UFM 1:</b>	(N/mm <sup>2</sup> )
After 1 day	6.1/54.0
After 28 days	8.1/72.6
After 56 days	8.6/76.0

<b>UFM 3:</b>	(N/mm <sup>2</sup> )
After 1 day	6.0/51.0
After 28 days	8.0/80.0
After 56 days	8.2/81.0

#### Processing time

Approx. 30 minutes (at +20 °C)

### Form of delivery

25 kg bag  
(Pallet: 40 bags)



## Emcekrete

# MFT

## Assembling and settling mortar

### Product properties

- Ready to use, just mix with water
- High strengths
- Statically allowable
- High carbonation resistance
- Shrinkage-free hardening
- Pumpable with spiral pumps
- Certified acc. to EN 1504-3, class R3

### Areas of application

- Masonry, assembling mortar
- Fullfilling of segmental joints of precast manufacture
- Underfilling of steel and concrete construction

### Characteristics

#### Grain size

0–4 mm

#### Processing time

1–1.5 hours (at +20 °C)

#### Processing temperature

≥ +5 °C – ≤ +35 °C

#### Density as fresh mortar

Approx. 2.1 kg/dm<sup>3</sup>

#### Flexural/Compressive

<b>strength</b>	(N/mm <sup>2</sup> )
After 1 day	3.0/10.0
After 7 days	6.0/39.0
After 28 days	8.0/54.0

#### Processing time

Approx. 30 minutes (at +20 °C)

### Form of delivery

40 kg bag  
(Pallet 30 bags)









# Special mortars

## For stable connections

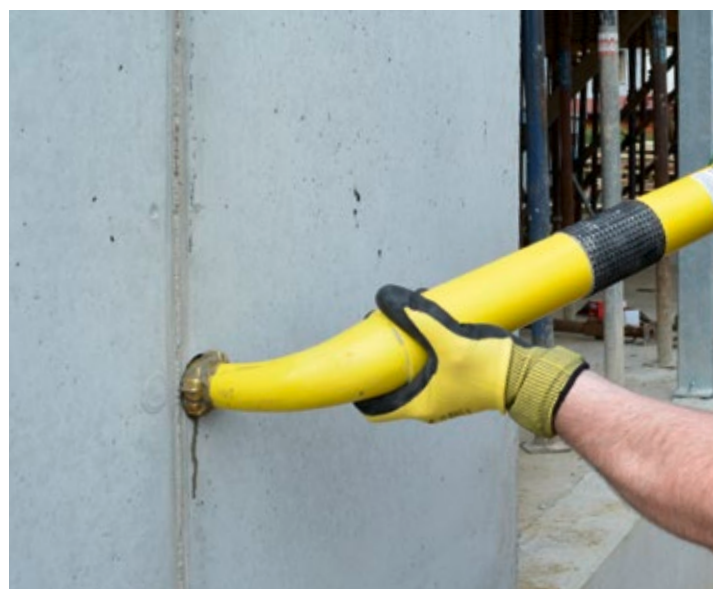
Concrete, steel, plastic, stone, ceramic ... opposites attract. Therefore, SX 481 E does not just agglutinate concrete elements fast and simply, but is also a superb connection between different materials.

For quick repairs, the user-friendly Nafufill SC 08 is particularly suitable.

Emcecrete SFM thix fills fast and easy joints and anchor holes.

### Complementary tools

<b>MC-HM Pump</b>	For joint filling
<b>MC-HMA Pump</b>	For anchor hole filling



## SX481 E

Adhesive mortar for structural bonding

### Product properties

- High adhesion; steady
- High compressive strength
- Solvent free
- Two component
- Water resistant
- Frost-thaw-salt resistant acc. to EN 13687-1
- Thermal compatibility thunder shower acc. to EN 13687-2
- Resistant to temperature changes
- Certified acc. to EN 1504-4, adhesive for structural bonding
- Colour: concrete grey

### Areas of application

- For adhering concrete elements, natural stone, steel, plastic (primer necessary!), wooden and ceramic modules
- For smoothing out concrete flatness imperfections and bumps
- For filling hollow spaces and levelling concrete surfaces
- Joint repair

### Characteristics

#### Grain size

0–0.5 mm

#### Consumption

Approx. 1.6 kg/m<sup>2</sup>  
(per mm layer thickness)

#### Processing time

Approx. 45 minutes (at +20 °C)

#### Drying time (at +20 °C)

Walkable: after 6 hours  
Reworkable: after 12 – 24 hours  
Fully hardened: after 7 days

### Form of delivery

10 kg bucket (Pallet: 33 buckets)  
5 kg bucket (Pallet: 54 buckets)  
2.5 kg bucket (Pallet: 54 buckets)



## Nafufill

## SC 08

Repair shotcrete and mortar

### Product properties

- Ready to use, just mix with water
- Frost and de-icing salt resistant
- Enhanced with microsilica additives
- High carbonation resistance
- Highly sulphate resistance
- Chloride free
- Low elasticity modulus
- Easy to handle overhead
- Open to water vapour diffusion
- Class R3 acc. to EN 1504-3
- Colour: cement grey

### Areas of application

- Dry sprayed concrete
- For repair of large-scale and deep ruptures
- For creation of supporting walls and reinforcement of existing constructions
- For creation of levelling layers on horizontal areas
- Exposure class: XC 1-4; XF 1-4; XS 1; XD 1-3; XA 1-3

### Characteristics

#### Grain size

0–8 mm

#### Flexural/Compressive

strength (N/mm<sup>2</sup>)

After 7 days 4.9/38.8

After 28 days 5.7/43.7

#### Processing temperature

≥ +5 °C – ≤ +35 °C

#### Layer thickness

30 mm min. per work step  
60 mm max. per work step  
120 mm max. total layer

#### Density as fresh mortar

Approx. 2.31 kg/dm<sup>3</sup>

### Form of delivery

25 kg bag



## Emcecrete

## SFM thix

Filling mortar for joints and anchor holes

### Product properties

- Ready to use, just mix with water
- Non shrinking, chloride free
- Exceptionally soft and smooth
- Frost and sulphate resistant
- Water impermeable acc. to EN 12390-8
- Pumpable
- Colour: grey

### Areas of application

- Filling of anchor holes
- Filling of joints of precast-elements (connection of walls and columns)
- Filling of door frames

### Characteristics

#### Grain size

0–1 mm

#### Flexural/Compressive

strength (N/mm<sup>2</sup>)

After 1 day 4.1/22.1

After 7 days 5.2/45.5

After 28 days 7.4/46.5

#### Processing temperature

≥ +5 °C – ≤ +35 °C  
(air/substrate/material)

#### Processing time

Approx. 45 min (at 20 °C)

#### Form of delivery

25 kg bag (Palett: 48 bags)



# MC-Estrifan SN

## A smooth thing

With the ready to use, polymer-based floor leveling systems MC-Estrifan SN we offers you both self-leveling as well trowelable compounds, for construction layers of 1 - 60 mm.

## A solid basis

MC-Estribond product line includes bonding agents and primers for economical and user-friendly processing on almost all types of substrate.

## MC-Estribond MB

Mineral-based slurry, which is particularly suitable for use in compound screeds. It allows optimal adhesion of the new screed on the substrate.

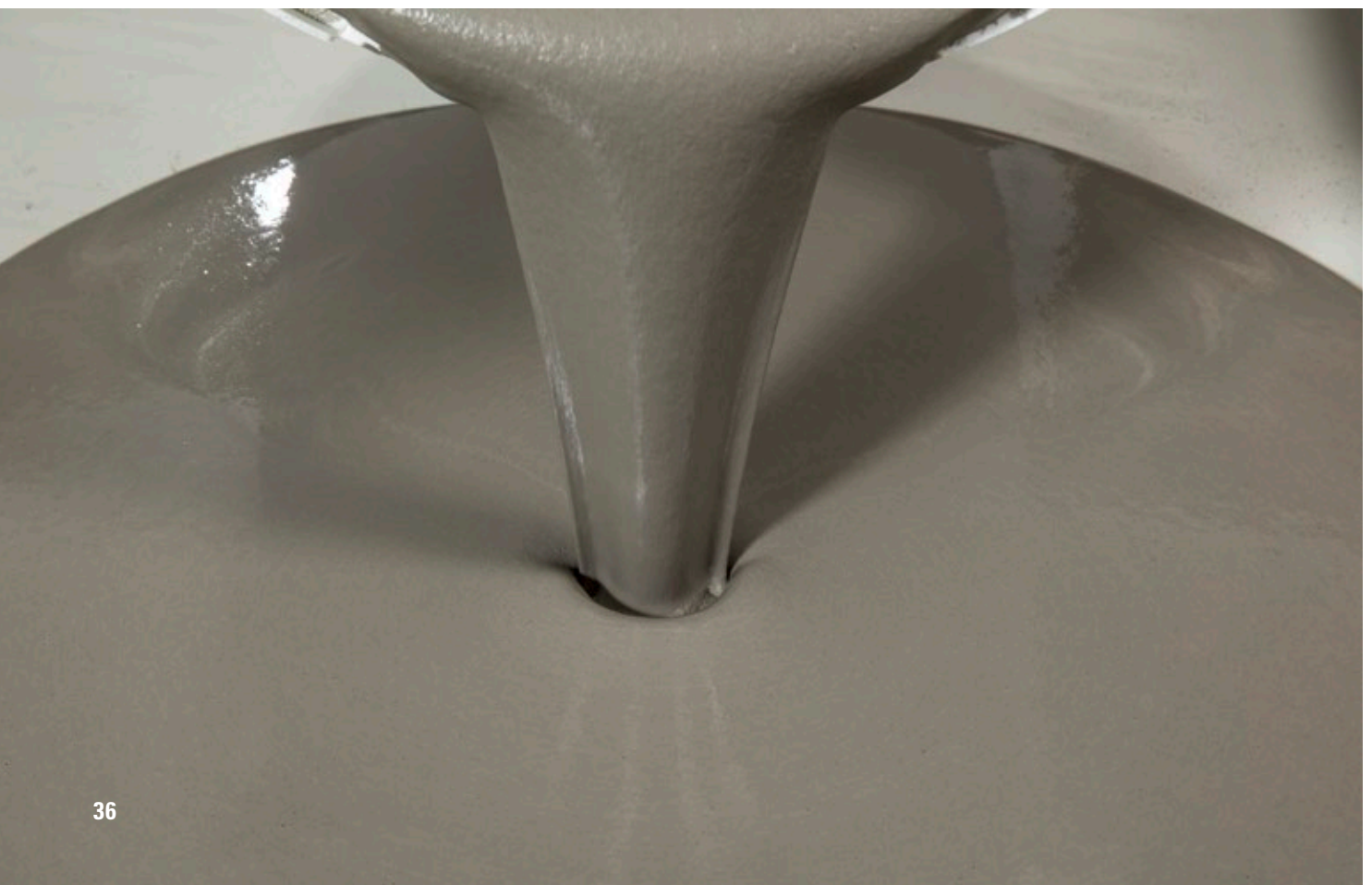
## MC-Estribond T15

Water-based primer developed for highly absorbent substrates. Dusting and sanding surfaces are reliably solidified.

## MC-Estribond uni

Bonding agent for absorbent and non-absorbent substrates. MC-Estribond uni is characterized by its fast drying and very good adhesion to various substrates.

Recommended for ...	MC-Estribond		
	MB	T 15	uni
Absorbent substrate	•	•	•
Non-absorbent substrate			•
Absorbent / non-absorbent substrate		•	•
Composite screed	•		
Outdoor / Wet area	•	•	•
Self-levelling compounds		•	•



## MC-Estrifan

## SN 10

Self-levelling mortar  
for floors

## Product properties

- Ready to use, simply mix with **water**
- Polymer modified
- Self levelling
- Self equalizing
- Quickly loadable
- Can be applied in layer thicknesses of up to 20 mm per work step
- Low emission according to AgBB (VOC), low chromate content according to TRGS 613
- Waterproof, frost resistant
- Rated according to EN 13813-CT-C30-F7-A22-B1,5

## Areas of application

- Levelling of uneven cement screeds, concrete floors, ceramic and natural stone floors and the like for both
- Indoors and outdoors
- Areas with floor heating
- Substrate for different floor covering, like ceramic tiles, carpeting and the like

## Characteristics

## Processing time\*

Approx. 30 minutes

## Processing temperature

$\geq +5^{\circ}\text{C} - \leq +30^{\circ}\text{C}$

## Drying times\*

Resistant to foot traffic:  
after 3 hours  
Can be covered with tiles:  
after 6 hours  
(depending on covering)\*\*

## Consumption

Approx. 1.6 kg/m<sup>2</sup>/mm

## Form of delivery

25 kg bag  
(Pallet: 40 bags)



## MC-Estrifan

## SN 25

Self-levelling mortar  
for floors

## Product properties

- Ready to use, simply mix with **water**
- Polymer modified
- Self levelling
- Can be applied in layer thicknesses between **5 to 25 mm** per work step
- Good mechanical properties (accessible for cars and casters)
- Frost resistant
- Rated according to EN 13813-CT-C30-F6-A22-B1,5

## Areas of application

- Levelling of uneven cement screeds and concrete floors indoors and outdoors
- Pre-fabricated concrete garages
- Areas with floor heating

## Characteristics

## Processing time\*

Approx. 30 minutes

## Processing temperature

$\geq +5^{\circ}\text{C} - \leq +30^{\circ}\text{C}$

## Drying times\*

Resistant to foot traffic  
after 12 hours  
Can be covered with tiles  
after 24 hours  
(depending on covering)\*\*

## Consumption

Approx. 1.8 kg/m<sup>2</sup>/mm

## Form of delivery

25 kg bag  
(Pallet: 40 bags)



## MC-Estrifan

## SN 60 T

Cement based screed mortar

## Product properties

- Ready to use, simply mix with **water**
- Pumpable with screed pumps
- Quickly loadable
- Easy manual processing, can be worked with blade trowels
- Can be applied in layer thicknesses between 10 to 60 mm per work step
- Frost resistant when completely hardened
- Rated according to EN 13813-CT-C40-F6-A15-B1,5

## Areas of application

- Levelling of uneven cement screed and concrete floors
- Levelling and manufacture of screeds on steeply sloped areas, e.g. ramps
- Manufacture of screeds on separating layers and compound screeds in indoor and outdoor areas

## Characteristics

## Processing time\*

Approx. 30 minutes

## Processing temperature

$\geq +5^{\circ}\text{C} - \leq +30^{\circ}\text{C}$

## Drying times\*

Resistant to foot traffic  
after 24 hours  
Can be covered with tiles  
after approx. 3 days  
(depending on covering)\*\*

## Consumption

Approx. 2 kg/m<sup>2</sup>/mm

## Form of delivery

25 kg bag  
(Pallet: 40 bags)



# MC-Estrifan

## From surface finishing to coating

### Surface improvement

MC-Estrifan SI is a water-based surface improvement that additionally solidifies and hydrophobizes your screed / concrete.

### Surface sealing

MC-Estrifan D is an epoxy sealant that provides you with reliable surface protection against abrasion and chemicals.

### Priming/scratching and voids filling

With the epoxy resin MC-Estrifan UP your concrete floor can be primed as well scratch-filled, when the resin is filled with sand.

### Surface coating:

MC-Estrifan HB is an epoxy-based thick coating with very good mechanical properties and high resistance to chemicals.

## MC-Estrifan

# SI

Surface improvement  
of mineral surfaces

### Product properties

- Has a hydrophobic, solidifying and dust-binding effect
- Increases the wear resistance of cementitious surfaces
- Increases the adhesive pull-off and tensile strength of cementitious surfaces
- Increases resistance to freeze-thaw and de-icing salt on cementitious surfaces
- Certified to EN 1504-2

### Areas of application

- Impregnation of alkaline, cementitious surfaces, such as concrete and screed
- Impregnation of industrial floors
- Wet after treatment agent for indoor concrete or screed

### Characteristics

#### Exposure

Min. 60 minutes

#### Processing temperature

$\geq +5^{\circ}\text{C} - \leq +30^{\circ}\text{C}$

#### Consumption

Min. 200 g/m<sup>2</sup>

### Form of delivery

30 kg canister  
200 kg barrel





## MC-Estrifan

## D

Screed impregnation agent

## Product properties

- Two component epoxy resin
- Solvent free
- Water dispersed
- Adheres even to matt damp (without visible moisture) mineral substrates
- Highly flame resistant (Fire protection class Bfl-s1 according to DIN EN 13501-1)
- Colour: transparent and grey
- Can be applied by brushing, rolling and spraying
- Certified acc. to EN 1504-2 and EN 13813

## Areas of application

- Impregnation of cement screed surfaces to bind dust (transparent)
- Increasing of mechanical and chemical load bearing capabilities of cementitious screeds
- Coloured coating of screed floors

## Characteristics

## Processing time:

Approx. 2 hours (at +20 °C)

## Processing temperature

≥+8 °C – ≤+30 °C

## Drying times\*

Accessible: after 16 hours

Ready for overworking:

after 6 – 8 hours

Fully loadable: after 7 days

## Consumption

Transparent: 200–250 g/m<sup>2</sup>Coloured: 250–300 g/m<sup>2</sup>

## Form of delivery

10 kg twin unit

(30 kg twin unit upon request)



## MC-Estrifan

## UP

Solvent free and transparent epoxy primer

## Product properties

- Two component
- Solvent free
- Transparent
- Low viscosity
- Very good adhesion to mineral substrates
- Highly fillable with oven dried quartz sand
- Certified acc. to EN 1504-2 and EN 13813

## Areas of application

- Primer on screeds
- Binder for epoxy resin mortars, scratch coats and repair coats
- Load bearing filling of dry cracks with crack widths between 1–2 mm

## Characteristics

## Processing time

1 kg unit: approx. 30 minutes\*

5 kg unit: approx. 25 minutes\*

10 kg unit: approx. 20 minutes\*

30 kg unit: approx. 15 minutes\*

## Processing temperature

≥+8 °C – ≤+30 °C

## Drying times\*

Accessible: after 12 hours

Fully loadable: after 7 days

## Consumption

Priming: 0.3–0.5 kg/m<sup>2</sup>\*\*Bonding agent: 0.3–0.5 kg/m<sup>2</sup>\*\*Mortar (Resin): 0.4 kg/m<sup>2</sup>/mm\*\*\*

## Form of delivery

1 kg twin units

5 kg twin units

10 kg twin units

30 kg twin units

(6 x 1 kg in one box)



## MC-Estrifan

## HB

Solvent free and pigmented primer

## Product properties

- Two component epoxy resin
- Solvent free
- Coloured, approx. RAL 7032
- Good adhesion on mineral substrates
- Coating with high resistance
- Certified acc. to EN 1504-2 and EN 13813

## Areas of application

- Coating of cement screeds
- Damp proofing for increased humidity (< 6 CM-%)
- Bonding agent between old and new concrete
- Filling voids and cavities in screed

## Characteristics

## Processing time\*

10 kg unit: approx. 40 minutes

1 kg unit: approx. 45 minutes

## Processing temperature

≥+8 °C – ≤+30 °C

## Drying times\*

Accessible: after 12 hours

Ready for overworking:

after 6 – 8 hours

Fully loadable: after 7 days

## Consumption

Bonding agent: 1–1.5 kg/m<sup>2</sup>

## Form of delivery

10 kg twin unit

(Pallet: 42 units)

1 kg twin unit

(6 x 1 kg in box)



## MC-Estrifan RIS

### Crack repair, joint filling

Even with a proper screed laying, cracks can sometimes occur near the surface or even across the entire cross section. If these are not eliminated, they can cause serious damage at a later date.

You can use our two-component reactive resins, quickly, cleanly and safely, to repair cracks and close joints. With our products, it is not necessary to cut the cracks on the sides - this means less work for the frictional connection of cracks, false joints and breakouts.

MC-Estrifan

## RIS-Jet

Dispenser

### Product properties

- Allows precise and economic processing
- Applicable without special mixing process
- Ready to use
- No power connection and cleaning necessary

### Form of delivery

1 per box



## MC-Estrifan

## RIS

Epoxy Resin for filling of cracks in screed and concrete floors

## Product properties

- Two component
- 400 ml in two component cartridges
- Application with MC-Estrifan RIS-Jet
- Solvent free
- Low viscosity
- Good penetration into cracks and voids
- No separate mixing necessary
- Easy and clean application
- Certified acc. to EN 1504-2

## Areas of application

- Impregnation of hairline cracks and craquele cracks
- Load bearing filling of cracks and voids in screeds and structures made of concrete and reinforced concrete

## Characteristics

## Processing time

Approx. 11 minutes (at +20 °C)

## Processing temperature

$\geq +8^{\circ}\text{C} - \leq +30^{\circ}\text{C}$

## Form of delivery

Box with 6 x 400 ml two component cartridges and 10 static mixers



## MC-Estrifan

## IH

Epoxy resin for filling of cracks in screed and concrete floors

## Product properties

- Two component
- Application by brush injection
- Solvent free
- Low viscosity
- Good penetration into cracks and voids
- Transparent yellowish

## Areas of application

- Impregnation of hair line cracks and craquele cracks
- Load bearing filling of cracks and voids in screeds, structures made of concrete and reinforced concrete
- Suitable for crack widths  $> 0.2\text{ mm}$

## Characteristics

## Processing time

approx. 40 minutes (at +20 °C)

## Processing temperature

$\geq +8^{\circ}\text{C} - \leq +30^{\circ}\text{C}$

## Form of delivery

1 kg twin unit  
(6 x 1 kg in box)



## MC-Estrifan

## RIS-SL

Casting resin for crack filling in screeds

## Product properties

- Two component
- Application through spout directly from the bottle
- Frictional repair
- Deep penetration
- Early loadable
- Solvent-free
- Odourless
- Approved acc. to AgBB for indoor use

## Areas of application

- Crack repair  $> 0.2\text{ mm}$  wide
- Joint repair  $< 15\text{ mm}$  wide
- For floors indoor and outdoor
- For frictional connections
- Suitable for floor heating

## Characteristics

## Processing time

approx. 20 min. (23 °C/50 % RH)

## Viscosity

2.000 mPa.s

## Processing temperature

$\geq +2^{\circ}\text{C} - \leq +30^{\circ}\text{C}$

## Form of delivery

Package with 8 bottles  
Component A: 4 x 200 ml  
Component B: 4 x 400 ml





# Remove Stubborn Dirt Effectively

Rust and oil stains, efflorescence and cement residues on concrete surfaces as well as impurities in construction equipment can be removed reliably with the care and cleaning products from MC. Even for stubborn dirt we offer solutions – effective, economical and easy to handle.

Especially for construction equipment cleaners, it is important that they remove residues powerful, but at the same time do not attack the machinery and equipment. Donnitil Concretex 101 goes a step further: Not only does it remove stubborn concrete and mortar residues, it also protects your construction equipment from corrosion.

Substrate	Type of contamination	Solution
Concrete	Rust	MC-Rost Ex
	Oil	MC-Entöler
	Efflorescence/Cement residues	Donnitil 3X
Equipment	Hydraulic residue	Donnitil BGR 81
	Lime residue	
	Mortar residue	Donnitil Concretex 101
	Concrete residue	





MC-Bauchemie Müller GmbH & Co. KG  
CONCRETE INDUSTRY  
Am Kruppwald 1-8  
46238 Bottrop, Germany

Phone: +49 2041 101-50  
Fax: +49 2041 101-588  
Disposition: +49 2041 101-550

CI@mc-bauchemie.com  
Disposition: dispo.CI@mc-bauchemie.com  
www.mc-bauchemie.com



BE SURE. BUILD SURE.

Contact details

